

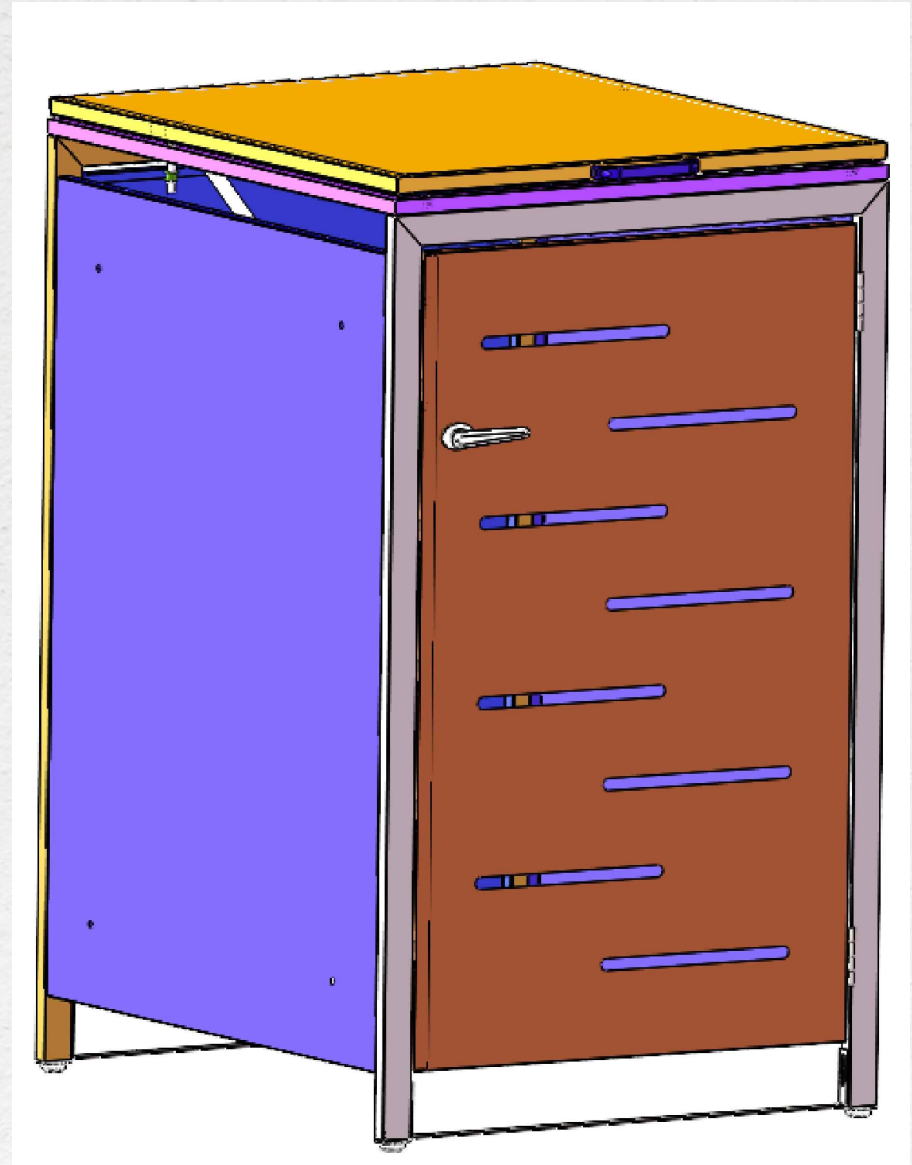
Owner's Manual & Assembly Instructions

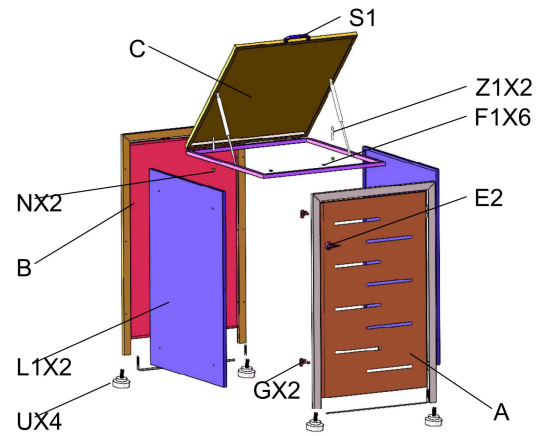
TRASH BIN BOX -1 DOOR

PREPARE

Please check all parts and components to ensure that there are no damages or missing items BEFORE starting the construction of the product.

CAUTION: SOME PARTS HAVE SHARP EDGES. CARE MUST BE TAKEN WHEN HANDLING THE VARIOUS PIECES TO AVOID A MISHAP. FOR SAFETY SAKE, PLEASE READ SAFETY INFORMATION PROVIDED IN THIS MANUAL BEFORE BEGINNING.

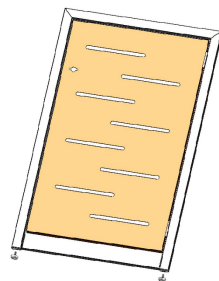




Front Door (AX1)	Rear Wall Panel (BX1)	Upper Cover (CX1)	Side Wall Panel (L1X2)
Door Handle (E2X1)		Lock with Magnet (E1X2)	Handle on Cover (S1X1)
Hook (T1X1)	Buckle (J1X3)	Rope (K1X2)	Rubber Stoper (F1X6)
Damper (Z1X2)	Damper Plug (NX2)	Screws (E20X40)	
Expansion screws (UX4)	Foot Support (UX4)	Shim (E21X10)	Nuts (M1X12)
			1 set of wrench

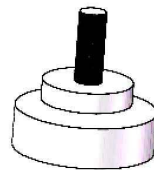
STEP 1

A



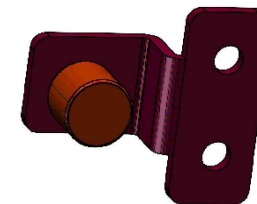
x2

U

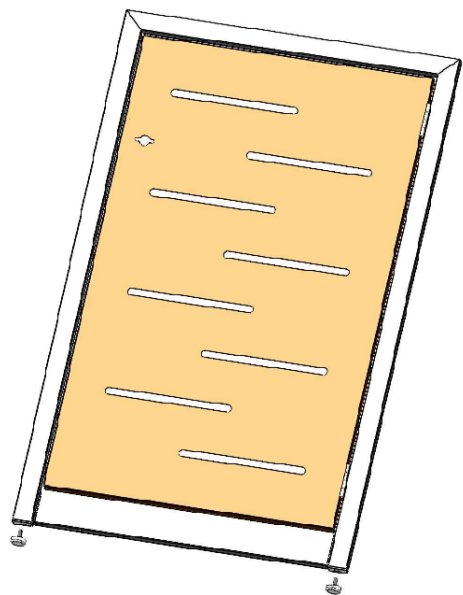


x2

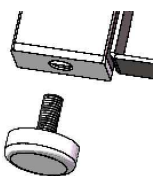
E1



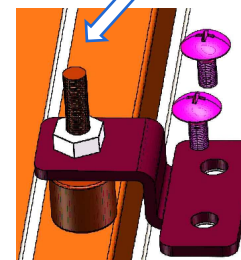
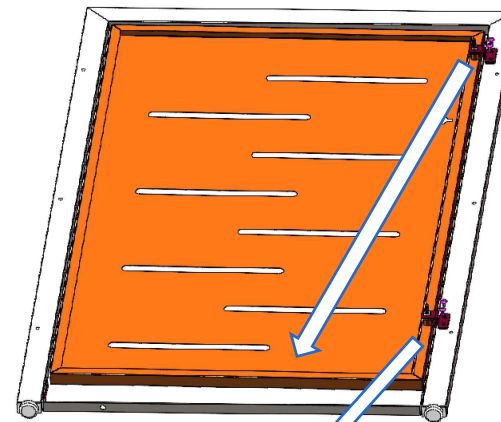
x2



UX2



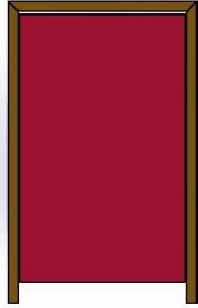
Install the U the support foot on the bottom of the door leaf as shown.



See the figure, insatll the E1 on the A, the door leaf as shown.

STEP 2

B

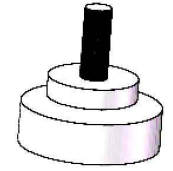


×1

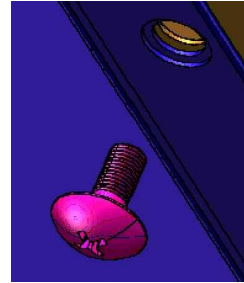
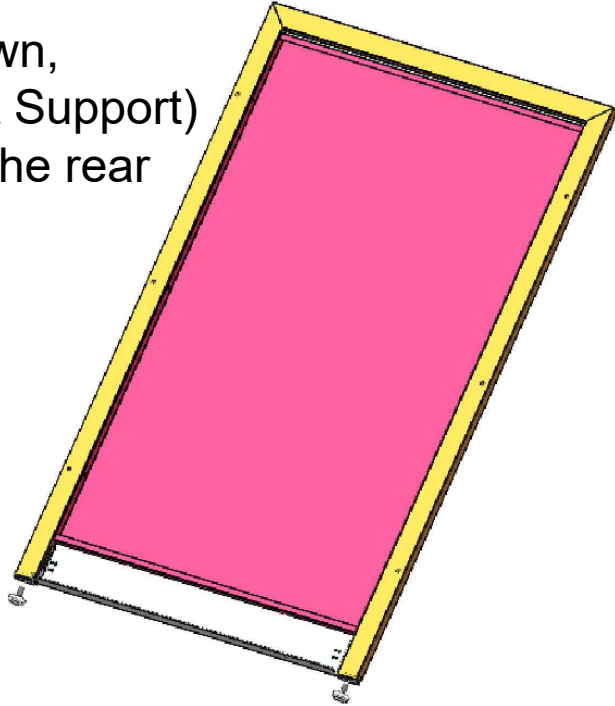
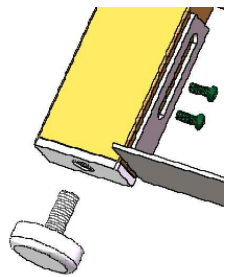
L1



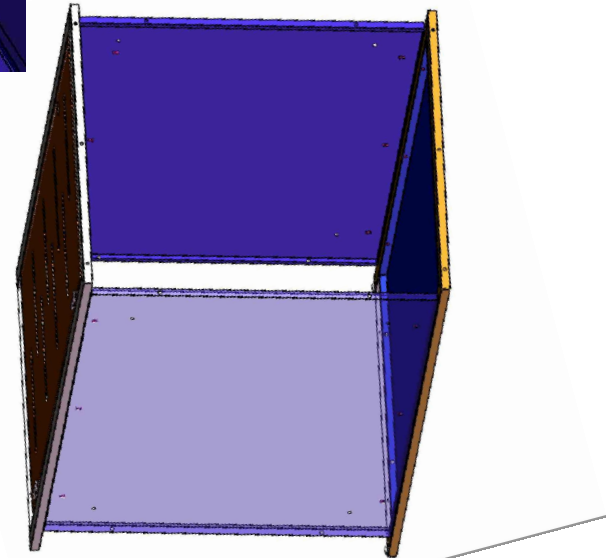
×2



As the figure shown,
install the U (Foot Support)
on the bottom of the rear
wall panel

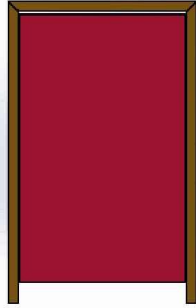


Stand the L1×2 as shown ,use
the screw to fix them with B(The
rear Wall Panel tightly)



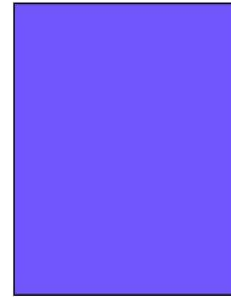
STEP 3

B

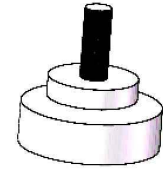


×1

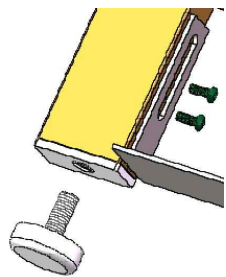
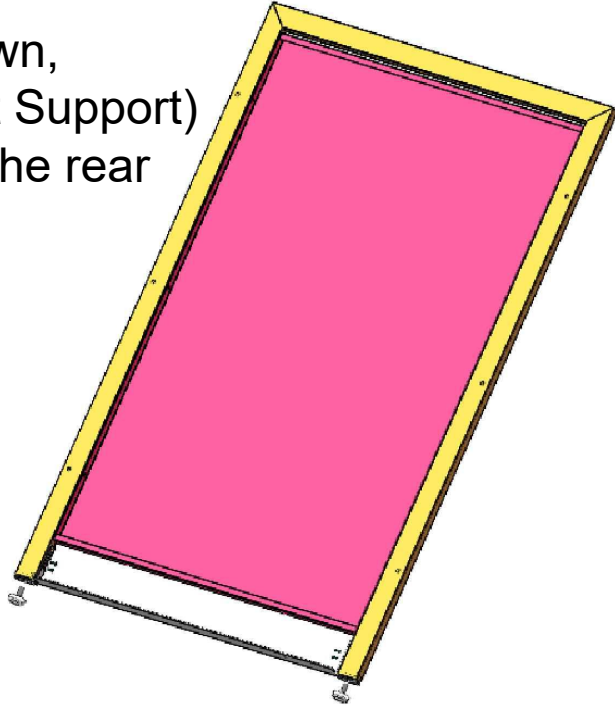
L1



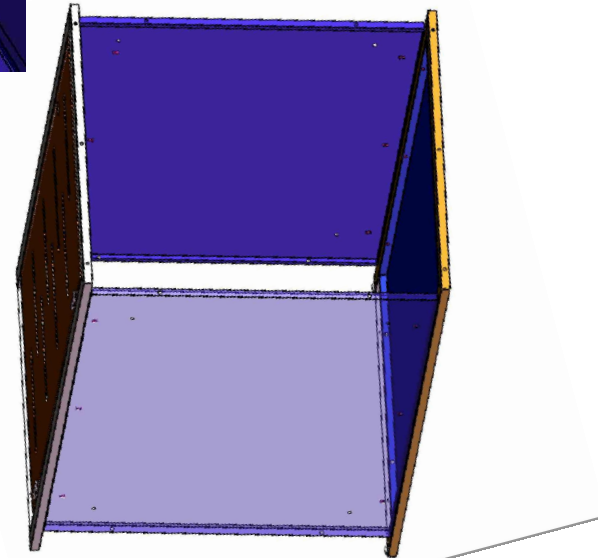
×2



As the figure shown,
install the U (Foot Support)
on the bottom of the rear
wall panel

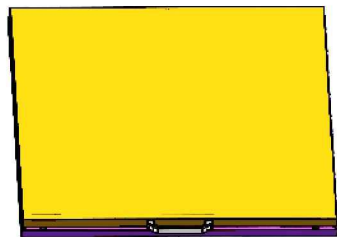


Stand the L1×2 as shown ,use
the screw to fix them with B(The
rear Wall Panel) tightly

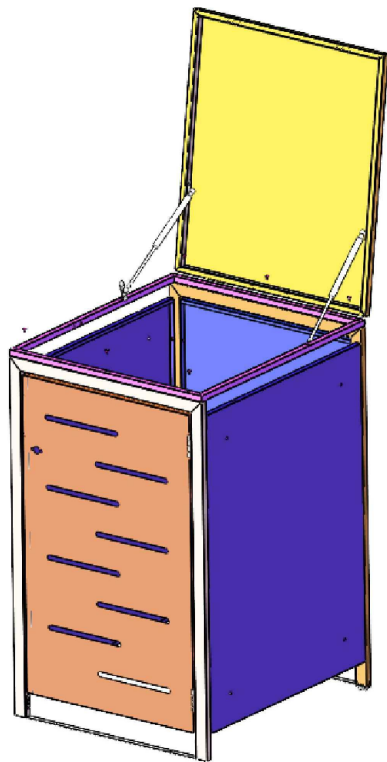
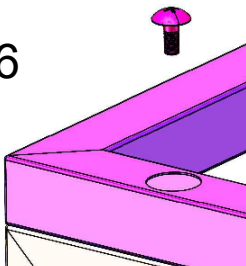


STEP 3

C1



E20X6



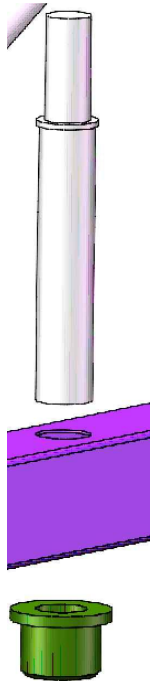
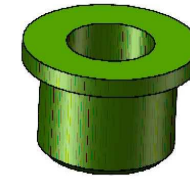
Install the C1 on the construction as shown, use the E20 the screws finish the fastening work.

STEP 4

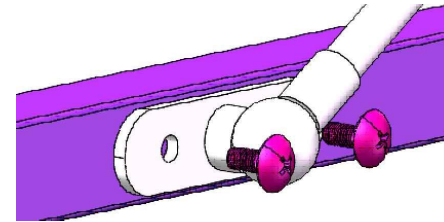
Z1



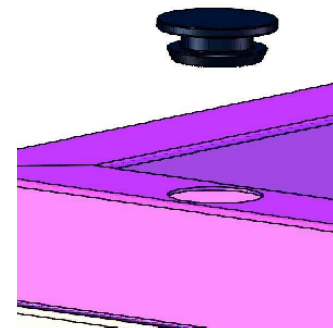
N



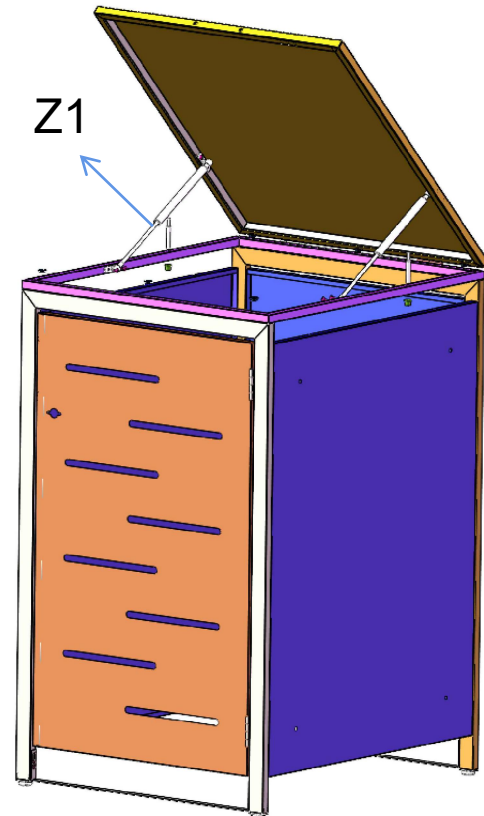
Put the Z1 on the Pre-setted holes as shown, then use the N to cover it from the bottom.



Install the C1 on the construction as shown



Put the rubber stop on the holes as shown.

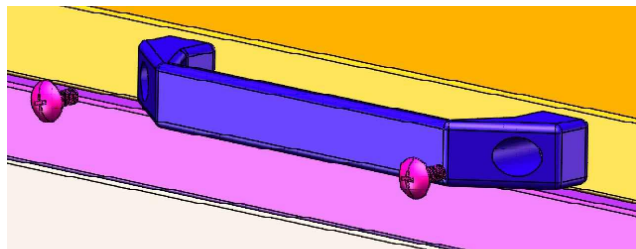
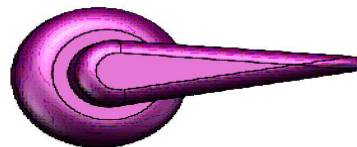


STEP 3

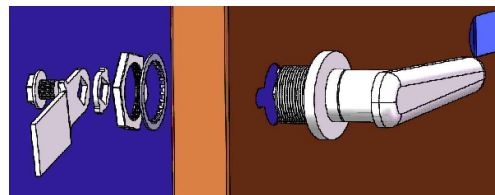
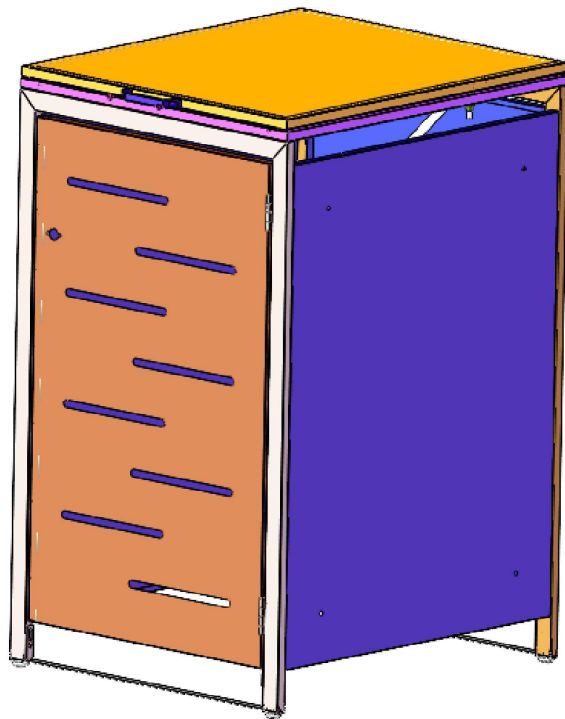
S1



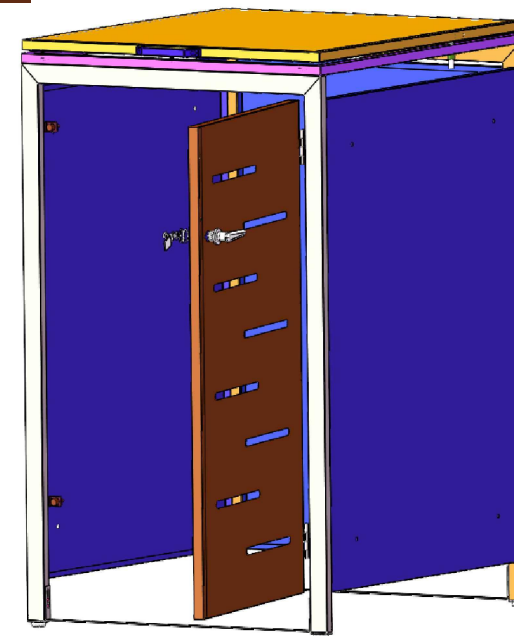
E2



Install the S1
(Handle) as shown



Install the handle
on the door leaf
as shown



STEP 3

T1



J1



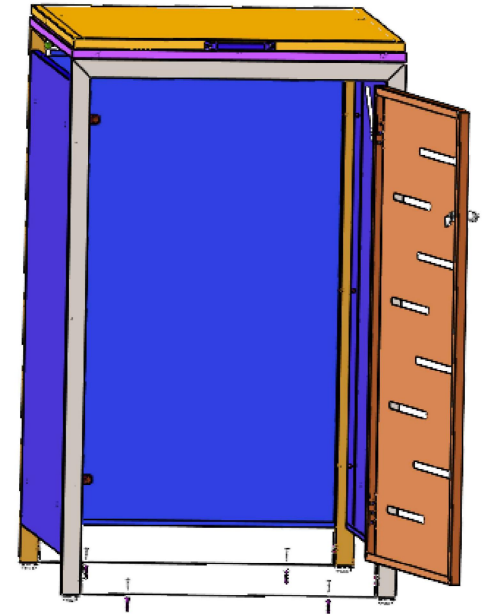
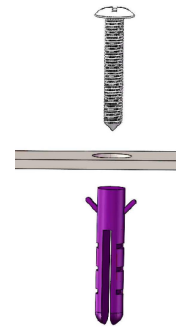
E22



Set the T1 on the cover as shown



Drive the expansion screw into the ground through the hole as shown



THANK YOU FOR WATCHING

